

MIDWEST THERMAL SOLUTIONS

YOUR FIRST STEP IN EFFECTIVE PREVENTATIVE MAINTENANCE

We have several Industrial Preventative Maintenance plans to help minimize your company's downtime and maximize profitability!

Midwest Thermal Solutions uses leading edge technologies in Infrared Thermal Imaging to reveal substantial savings for your company

Advantages of using Thermography:

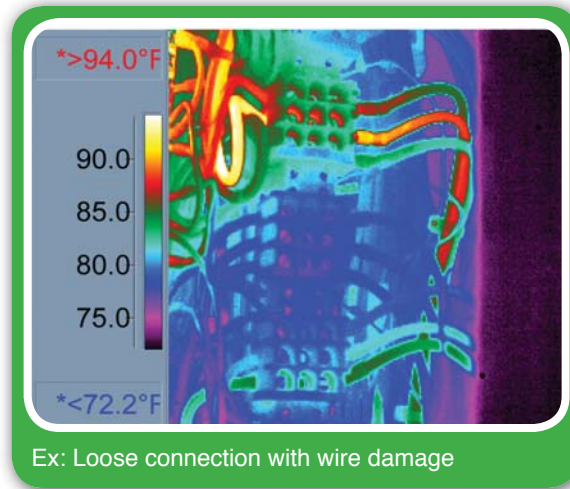
- Quick problem detection without interrupting service
- Prevention of premature failure and extension of equipment life
- Identification of potentially dangerous or hazardous equipment
- Reduction in Insurance Premiums
- Effective infrared scanning in order to save revenue and prevent down-time

Why Perform an Infrared Electrical/ Mechanical Survey?

An infrared electrical/mechanical survey program will quickly and efficiently help find areas that are most in need of your maintenance dollars.

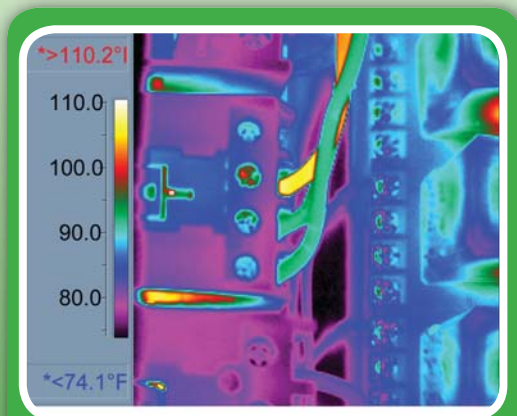
Thermography applications:

- Electrical Inspection in Buildings, Plants, Facilities, and Refineries
- Thermal heat loss inspections for buildings, plants, facilities, refineries
- Moisture contamination evaluations in facilities
- Concrete integrity inspections
- Flat roof leak detection for buildings, plants, facilities
- Power generation generator inspections
- Substation Electrical inspections, transformers and capacitor evaluation
- Overhead urban and rural Electrical Distribution Systems
- Electric Motor inspections
- Mechanical Bearing Inspections
- Cold Storage cooling losses
- Refinery process line insulation loss or leak detection
- Heat exchanger Quality and efficiency evaluation
- Furnace refractory (insulation) inspections
- Furnace Internal flame evaluation and tube inspections
- HVAC Equipment evaluation
- Pest infestation inspections



Thermography helps:

- Reduce casualty and property insurance liability and claims due to less chance for fire or other catastrophe.
- Prior to plant or system start-up, it can locate potential problems and "shake down" the electrical system.
- Provide effective preventive maintenance
- Improve manpower efficiency
- Reduce repair costs
- Provide more efficient maintenance scheduling
- Reduce scheduled shutdowns
- Help evaluate the quality of repair work
- Increase reliability of power distribution system
- Minimize production loss.
- Saves energy cost.



CALL US TODAY TO SET-UP YOUR APPT.

Hutchinson, KS Office

Brad Mendenhall

Office: 620-663-2246

Cell: 620-249-6774

brad@midthermal.com

Independence, KS Office

Tyson Carpenter

Cell: 620-704-0136

tyson@midthermal.com

www.midthermal.com